

expona[®]

FLOW

Unique addition to the EXPONA Family

Flooring has the ability to greatly influence and bring together an interior scheme, whether it is selected to provide a subtle neutral base, allowing other fixtures and furnishing within the space to shine, or chosen to make a bold statement with strong colours, lines and textures.

Historically recognised as offering luxury vinyl tiles, EXPONA FLOW is a unique collection of vinyl sheet designs within the EXPONA family.

Incorporating 50 heavy commercial floor covering options, EXPONA FLOW includes an assortment of floor finishes, textures and colours to suit any interior style.

Authentically replicating natural wood planks from a diverse range of tree species and wood treatments, combined with innovative abstract and fantastical materials, the variety of different colour and pattern combinations is vast.

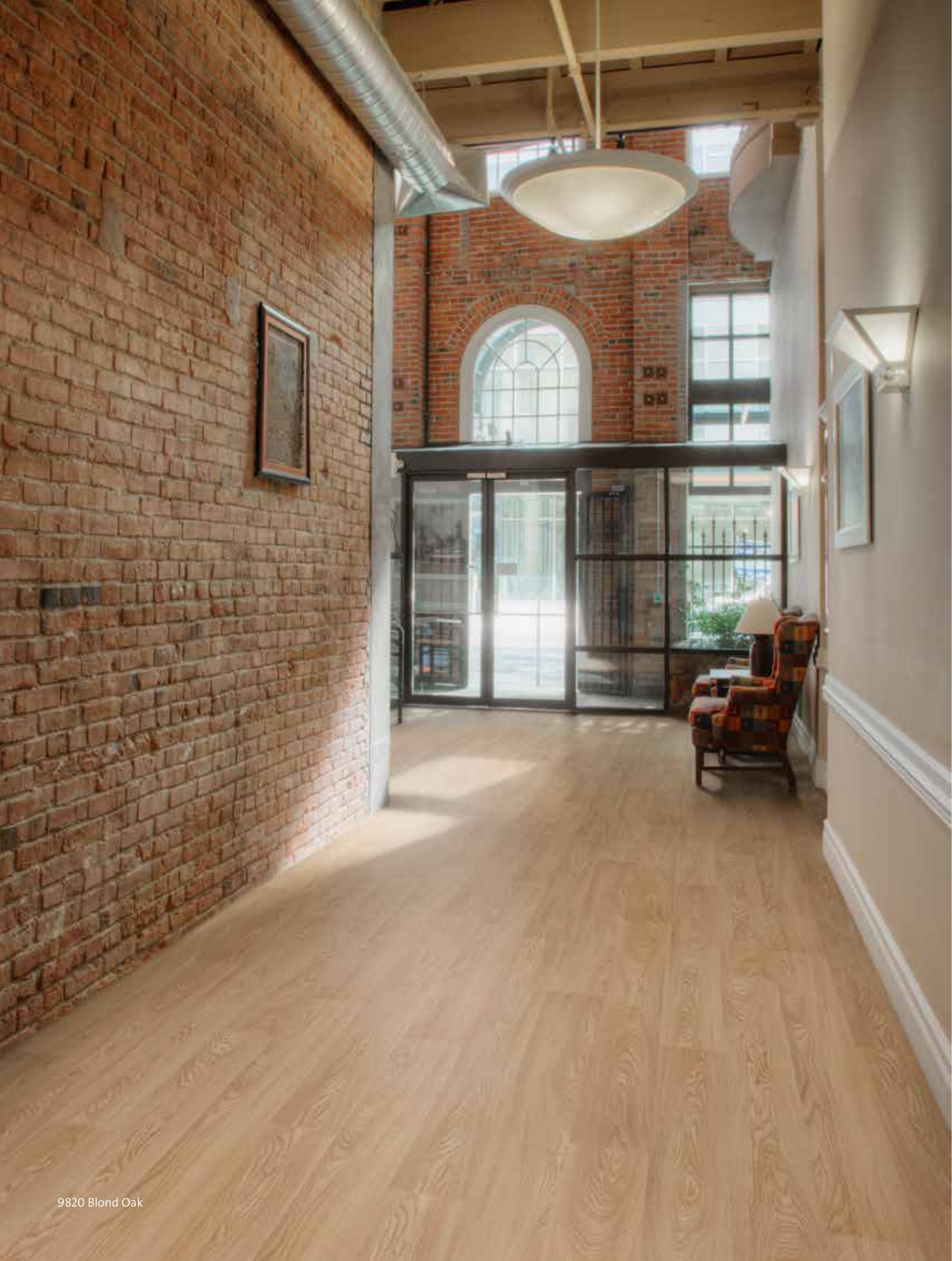
Combining over 20 years of technical, design and development experience, the EXPONA FLOW collection has been expertly created and exhibits high quality, passion and resilience, all traits expected from an EXPONA collection.



WOOD

Sympathetically portraying the natural beauty of timber planks, the EXPONA FLOW WOOD collection offers a mixture of tones, grains and treatments including weathered, painted and limed effects.

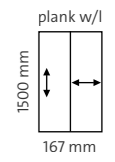
The subtle surface textures accentuate the many cracks and veins found in the natural wood designs, whilst giving the floor finish an authentic feel.



9820 Blond Oak

Classic Oak

Offering a classic design and familiar colour palette, oak continues to be a strong favourite in commercial interiors. These three oak plank shades incorporate warm and inviting wood tones, whilst the gentle uniform grain blends beautifully with a variety of interior design schemes.



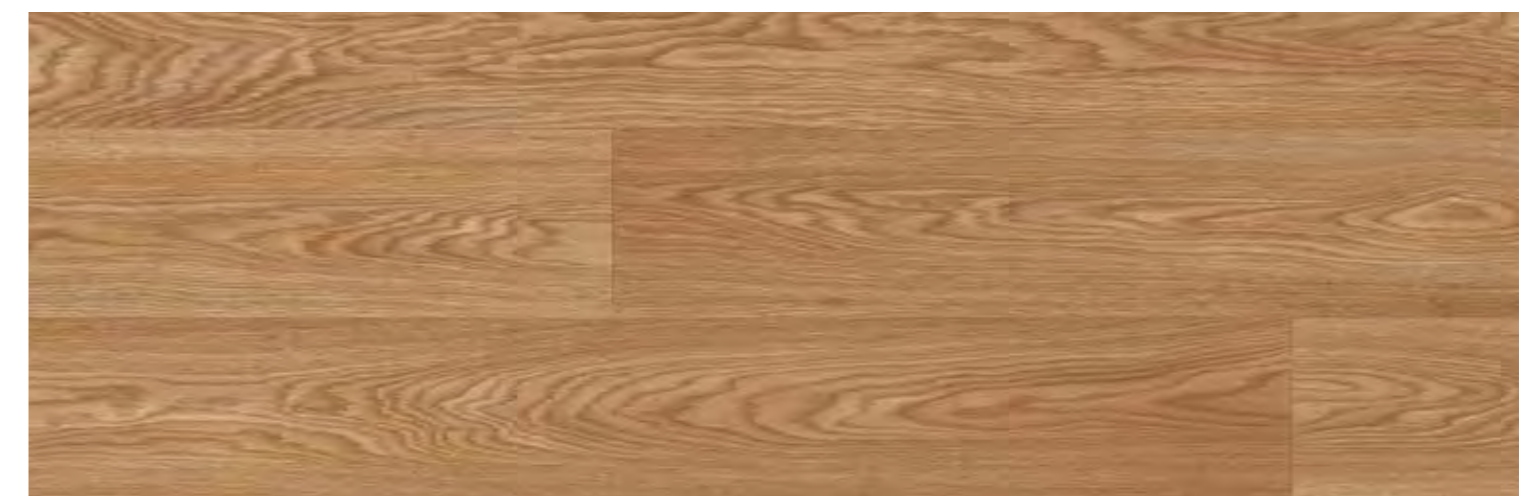
9820 | Blond Oak

w/r 9820



9821 | Honey Oak

w/r 9821



9822 | Toasted Oak

w/r 9822

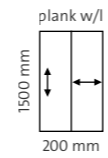


w/r – recommended colour welding rods

WOOD

Rustic Oak

Beautifully demonstrating the bold character that oak can offer an interior, these rustic plank designs suggest a strong, aged timber that give real character and a sense of history to a space. The wider plank and textured surface further accentuates this and adds weight to the traditional nature of the design.

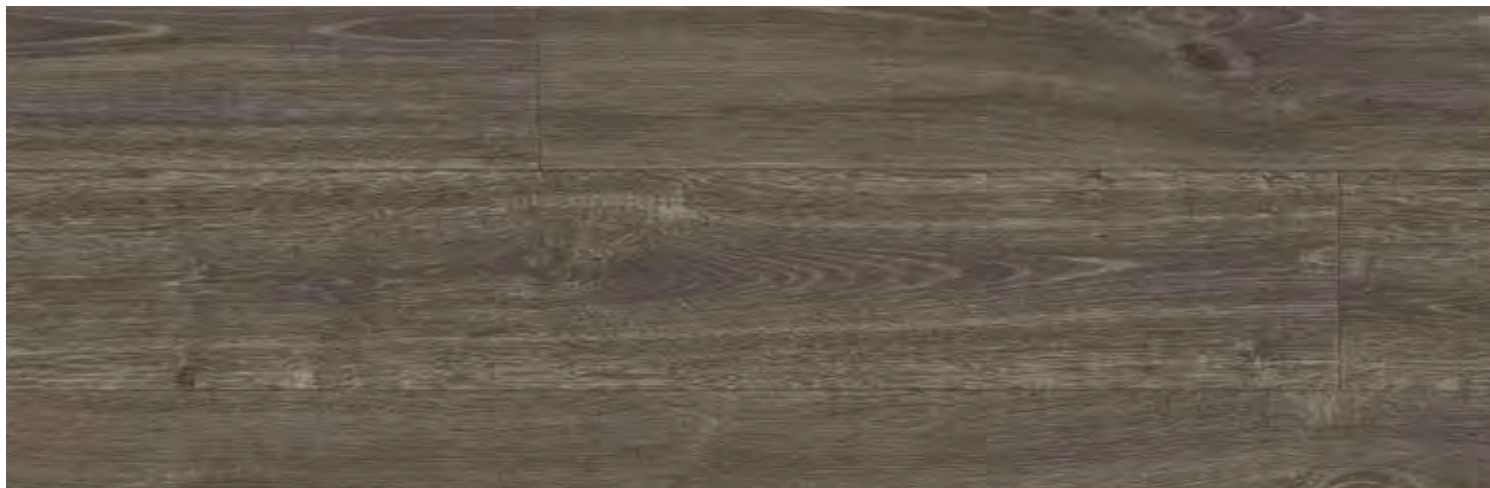


9826 | Silver Oak

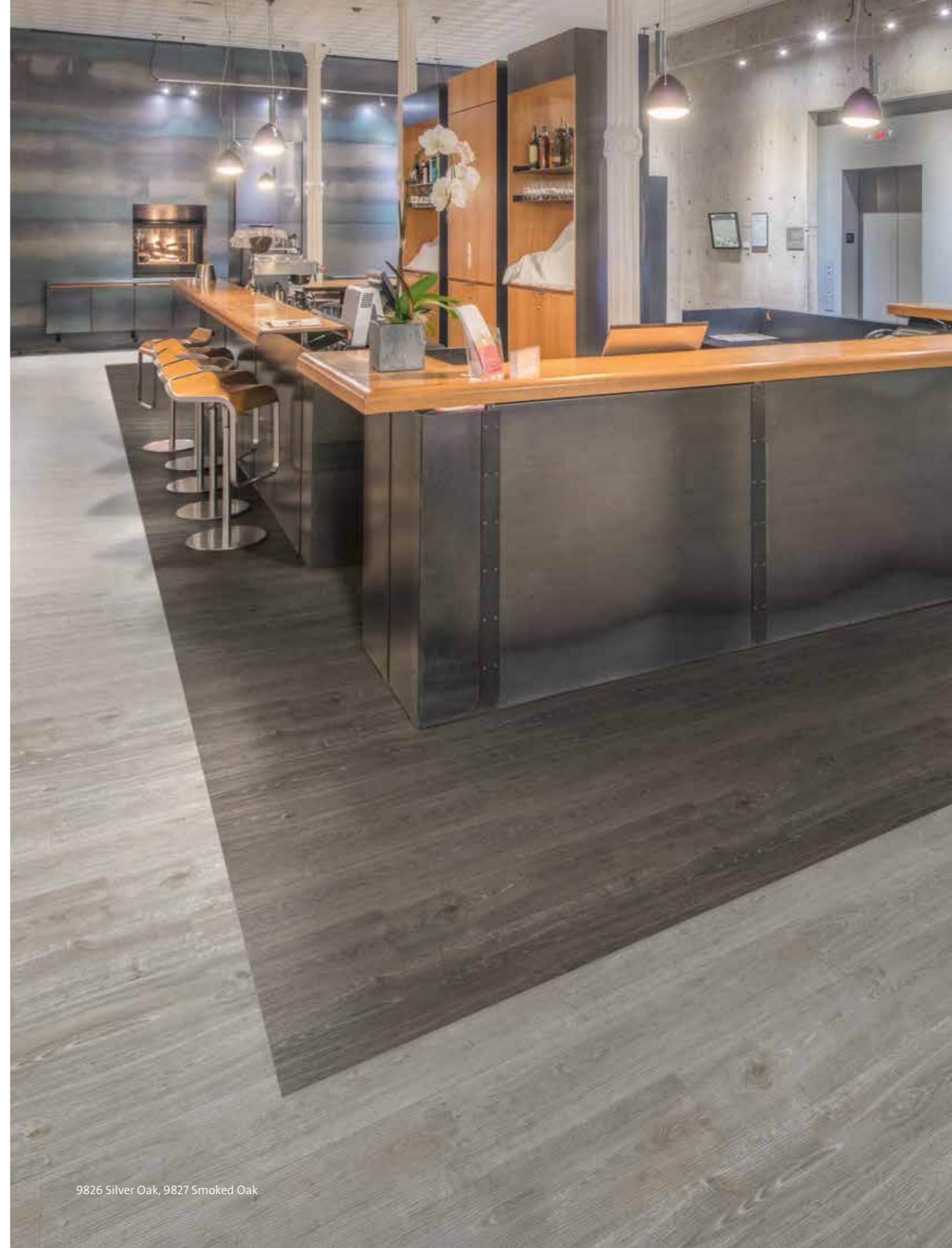


w/r 9826

9827 | Smoked Oak



w/r 9827



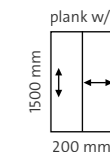
9826 Silver Oak, 9827 Smoked Oak



9824 Aged Oak

Rustic Oak

Unlike the colour palette on the previous page, Sun Bleached, English and Aged Oak, though rustic in grain texture and cracks, are more traditional shades of this popular timber. For those interiors looking to achieve a rustic appearance without making a bold statement, these warm subtle tones are more fitting.



9825 | Sun Bleached Oak

w/r 9825



9823 | English Oak

w/r 9823



9824 | Aged Oak

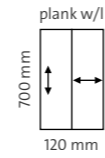
w/r 9824



WOOD

Chevron

This featured range of Chevron effects helps to create a dramatic statement within an interior whilst retaining the beauty of natural oak planks. By adding further surface textures such as a painted or reclaimed wood effect, each design gains subtle depth and unique detailing that is suitable for both traditional and contemporary interiors.



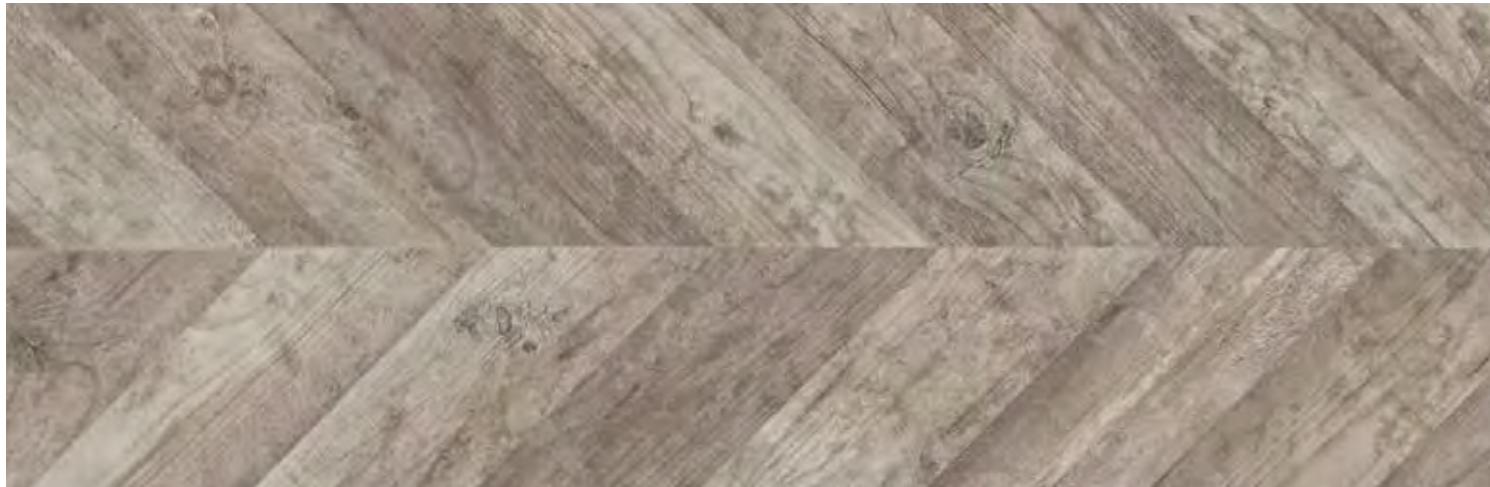
9828 | Painted Chevron

w/r 9828



9829 | Grey Weathered Chevron

w/r 9829



9830 | Reclaimed Chevron

w/r 9830



9830 Reclaimed Chevron



9833 Classic Limed Ash

9833 | Classic Limed Ash

w/r 9833

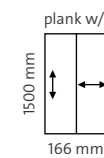


Roasted Limed Ash

9831 | Roasted Limed Ash



9832 | Warm Limed Ash



w/r 9831

Limed Ash

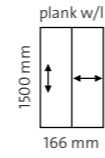
Simple clean lines and subtle tonal variations are just some of the characteristics that make ash planks so appealing to interior designers, all of which are beautifully captured in these three floor coverings.

The use of warming beige, taupe and grey shades further emphasises the delicate structure of the grain, for an elegant effect.

WOOD

Pine

The distinctive grain pattern of pine is instantly recognisable due to its wide use in interior schemes over the years. The strong plank characteristics of the Blond, Golden and Bronzed Pine designs featured here complement beautifully with the deep, golden tones and warm highlights within each plank.



9839 | Blond Pine



w/r 9839

9838 | Golden Pine



w/r 9838



9835 Bronzed Pine

9835 | Bronzed Pine

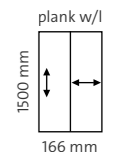
w/r 9835





Pine

Incorporating striking tonal variations for an eye-catching effect, the White, Silvered and Charcoal Pine designs are intended to make a statement. Differing from those on the previous spread, these monochrome floor finishes give the traditional pine design a fresh contemporary twist.



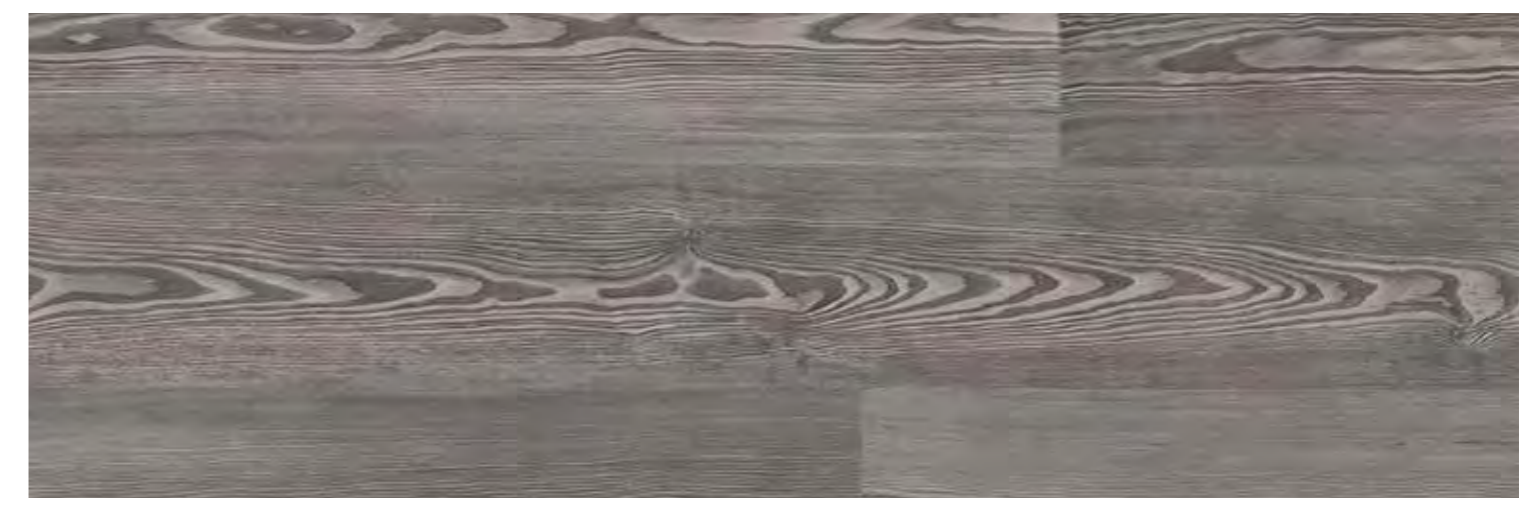
9834 | White Pine

w/r 9834



9836 | Silvered Pine

w/r 9836



9837 | Charcoal Pine

w/r 9837



9836 Silvered Pine, 9834 White Pine

STONE



By reproducing industrial concrete effects with authentic material properties, such as fine cracks or veins, the EXPONA FLOW STONE Collection sets a timeless trend.

As a creative highlight, the Ornamental pattern offers decorative flooring that can be combined with the concrete design to create expressive rooms.



9861 Copper Ornamental, 9845 Storm

Ornamental, Concrete

Providing a creative twist to an otherwise traditional polished concrete floor, these two ornamental designs bridge the gap between neutral and decorative flooring.

The irregular stencil work gives the appearance of an aged floor that has been worn down over many years. The cooler concrete shades are complementary colours here.

9861 | Copper Ornamental

w/r 9861



NEAREST NCS S 5502-R

9856 | Cool Concrete

w/r 9856



NEAREST NCS S 4500-N

9862 | Onyx Ornamental

w/r 9862



NEAREST NCS S 7000-N

9857 | Dark Grey Concrete

w/r 9857



NEAREST NCS S 6502-R





9858 Light Grey Concrete, 9855 Warm Concrete

Industrial Concrete, Concrete

Combining subtle tonal variations to add depth and detailing with a polished surface effect, these designs give the appearance of continuous poured concrete, ideal for interiors seeking a seamless floor finish.

Accurately recreated the appearance of rustic concrete with the addition of fine cracks and a sandy surface decoration, these industrial concrete floors satisfy the trend for unfinished, reclaimed textures within modern interiors. The warmer concrete shades are complementary colours here.

9859 | Dark Industrial Concrete

w/r 9859



NEAREST NCS S 4502-R

9860 | Light Industrial Concrete

w/r 9860



NEAREST NCS S 2500-N

9855 | Warm Concrete

w/r 9855



NEAREST NCS S 3502-R

9858 | Light Grey Concrete

w/r 9858

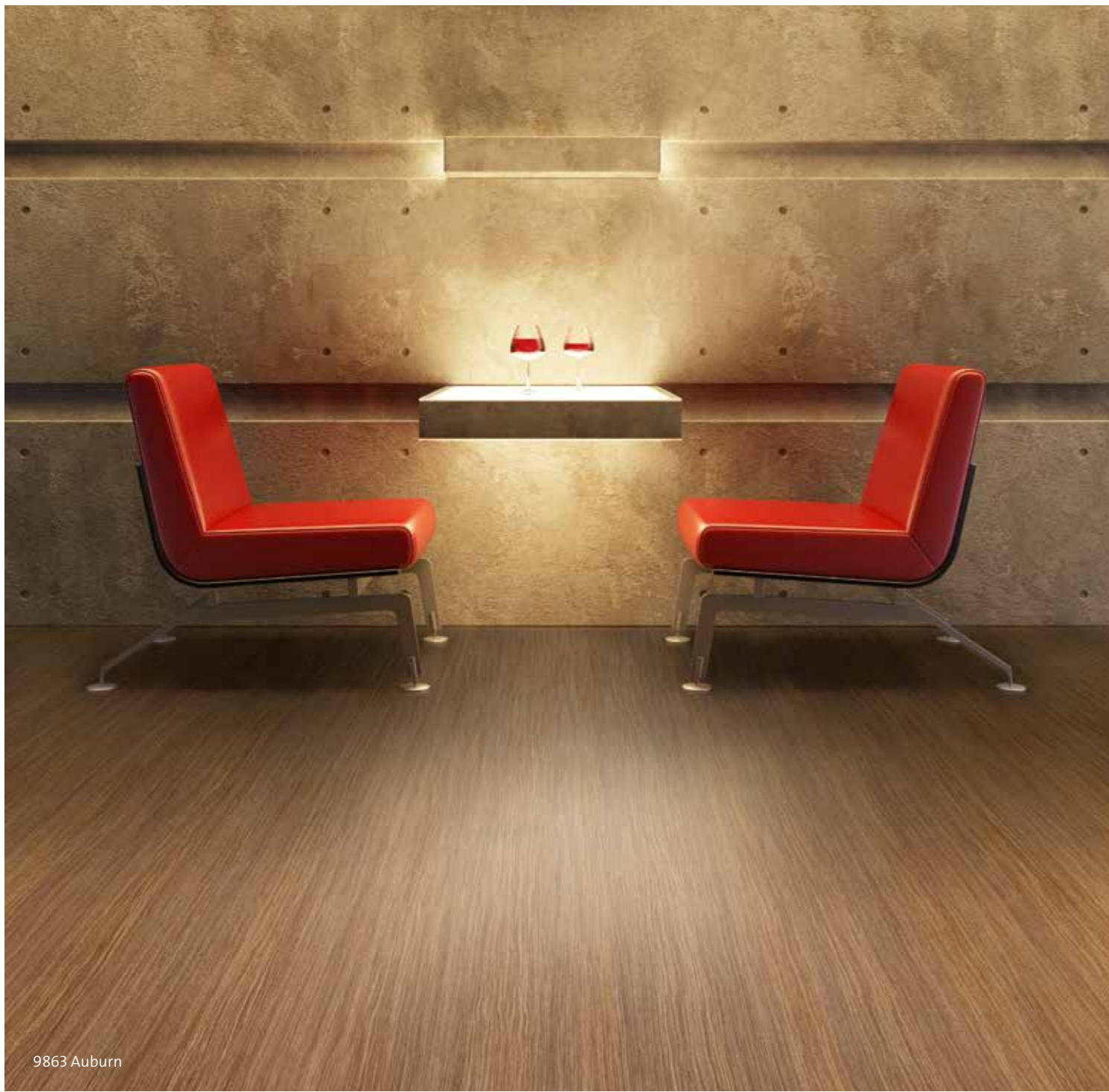


NEAREST NCS S 3000-N

EFFECT

Taking a more creative and abstract direction, the EXPONA FLOW EFFECT collection includes a variety of graphic patterns and industrial materials designed to excite the imagination.

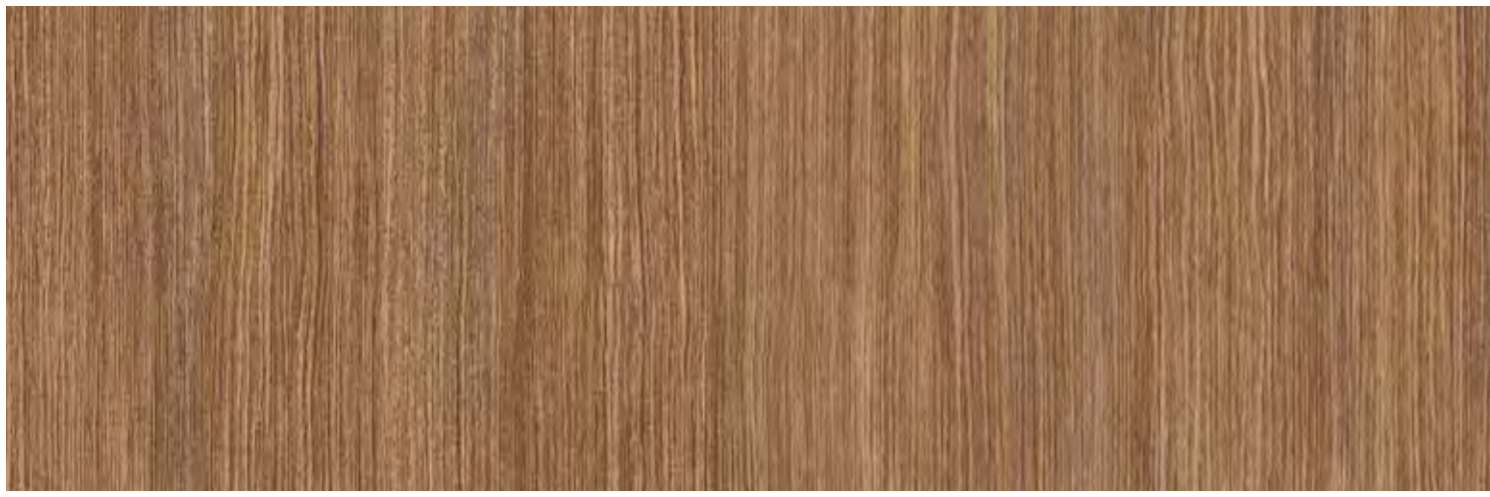
The mix of neutral shades and attractive brights can be used individually or in combination to create eye-catching installations.



9863 Auburn

9863 | Auburn

w/r 9863



NEAREST NCS S 5020-Y30R

Infinity

Drawing influence from traditional textiles and woven floor coverings, each of these linear patterns is composed of harmonious beige, gold and brown shades all blended together, eliminating the use of hard lines to create a softer, more organic appearance.

9869 | Honey Beige

w/r 9869



NEAREST NCS S 3005-Y50R

9867 | Espresso

w/r 9867



NEAREST NCS S 7005-Y80R

EFFECT

Infinity

Developed as a more graphic representation of the same linear design, the use of complimentary and contrasting shades within the flooring pattern makes a bold interior design statement, accentuated by the linear surface texture.

9868 | Firelight

w/r 9868



NEAREST NCS S 5020-Y40R

9865 | Night Sky

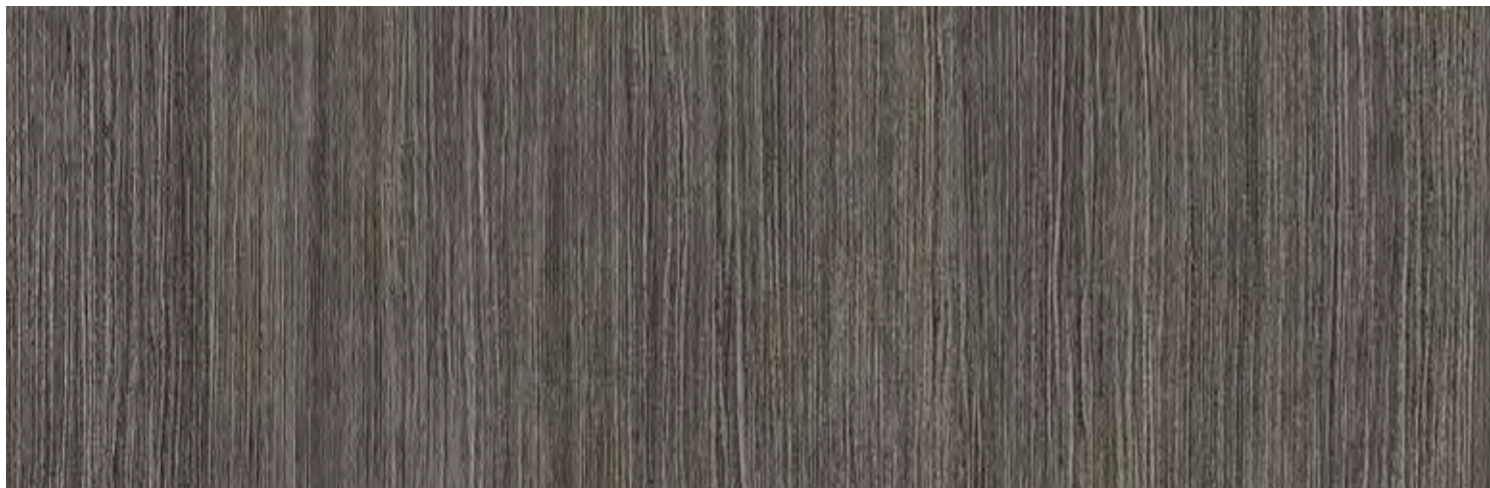
w/r 9865



NEAREST NCS S 7000-N

9866 | Raven

w/r 9866



NEAREST NCS S 7502-R



9864 Autumn Rain

9864 | Autumn Rain

w/r 9864



NEAREST NCS S 5005-Y80R



Cosmos

The minimal effect created by these smooth, neutral floor coverings marries beautifully with both traditional and contemporary interiors. The subtle highlights created by the pearlescent fragments within the design give the floor added depth and movement that changes with the light in the room.

9840 | Oatmeal

w/r 9840



NEAREST NCS S 2005-G90Y

9844 | Luna

w/r 9844



NEAREST NCS S 1502-B

9841 | Moleskin

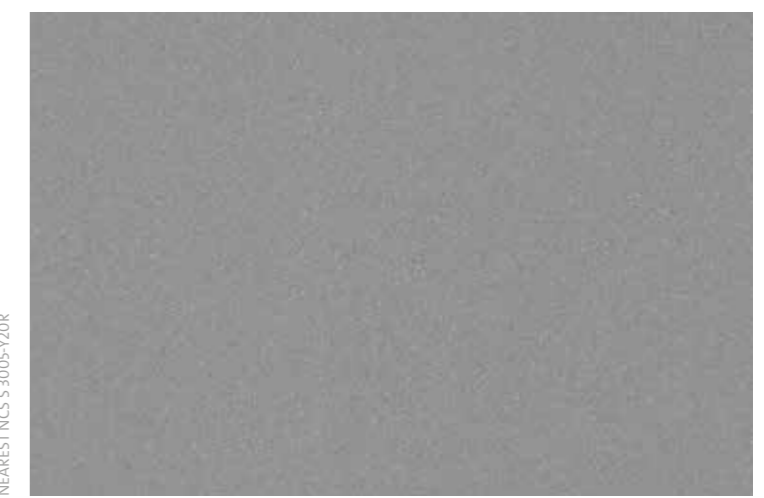
w/r 9841



NEAREST NCS S 3005-Y20R

9845 | Storm

w/r 9845



NEAREST NCS S 3502-B

9843 | Taupe

w/r 9843



NEAREST NCS S 7502-Y

9842 | Jet

w/r 9842



NEAREST NCS S 8000-N

9840 Oatmeal

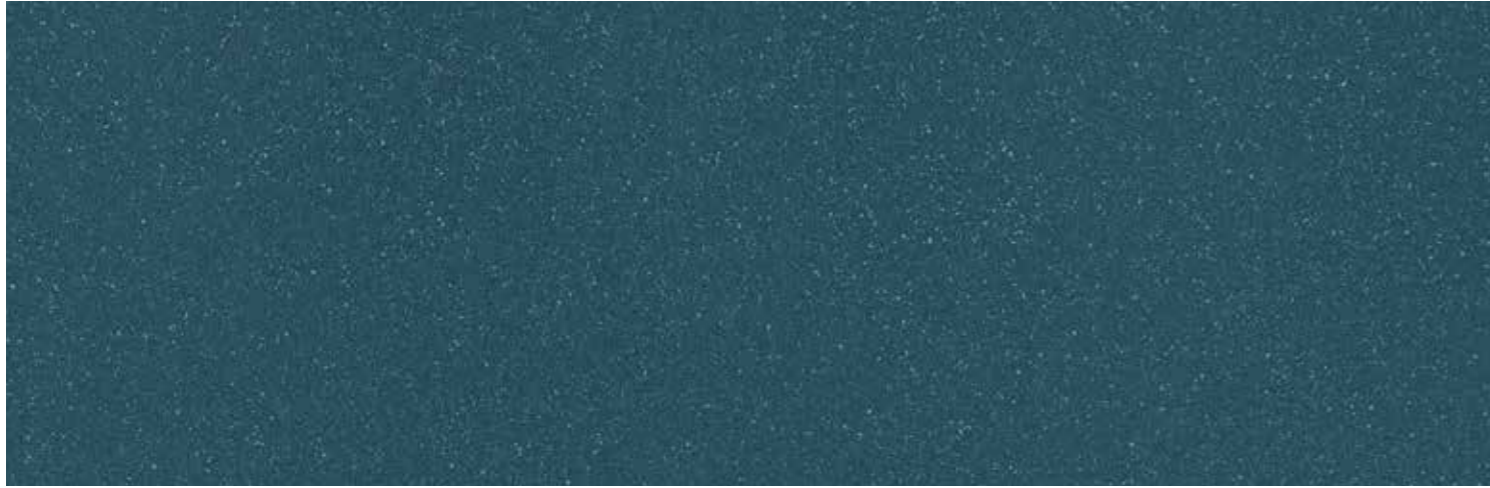
EFFECT

Cosmos

For those interior schemes that desire a more dramatic impact from the floor covering, the bold character of Teal, Steel Blue, Midnight and Woodland are extremely effective in creating an eye-catching base, without dominating the room.

9852 | Steel Blue

w/r 9852



NEAREST NCS S 6020-B10G

9854 | Midnight

w/r 9854



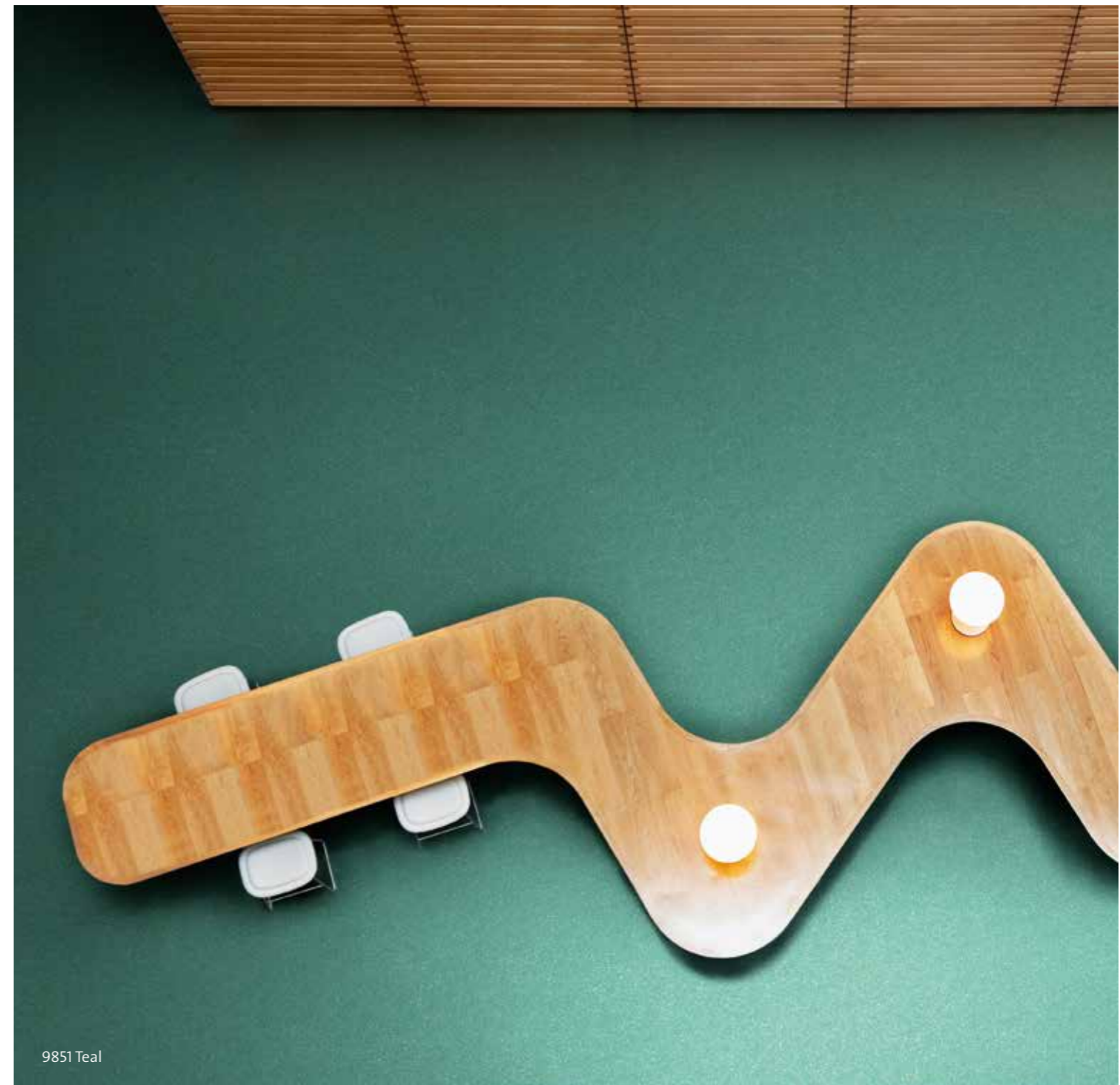
NEAREST NCS S 7005-R80B

9853 | Woodland

w/r 9853



NEAREST NCS S 6020-B50G



9851 Teal

9851 | Teal

w/r 9851



NEAREST NCS S 6020-B70G

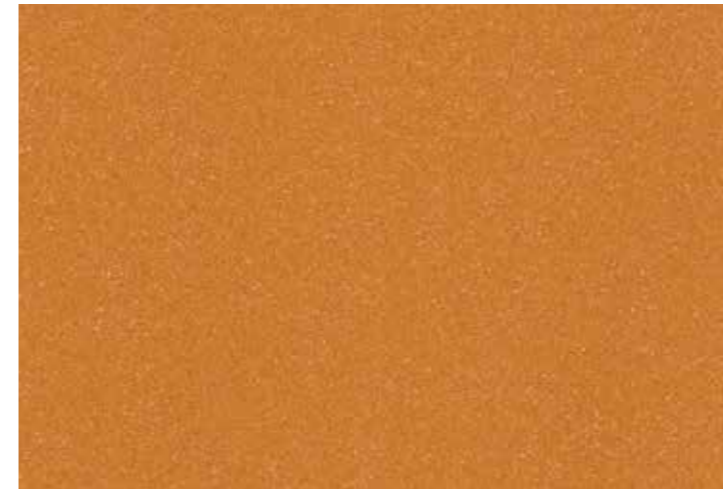


Cosmos

Presenting a lively and daring effect that heightens the visual senses, these intense shades work well together in creating an appealing floor covering that is both fun and functional. Ideally placed in interiors designed to be engaging, inspiring and stimulating, the subtle pearlescent highlights further enhance the effect and gives the floor added depth.

9848 | Burnt Orange

w/r 9848



NEAREST NCS S 3040-Y40R

9849 | Flaxen

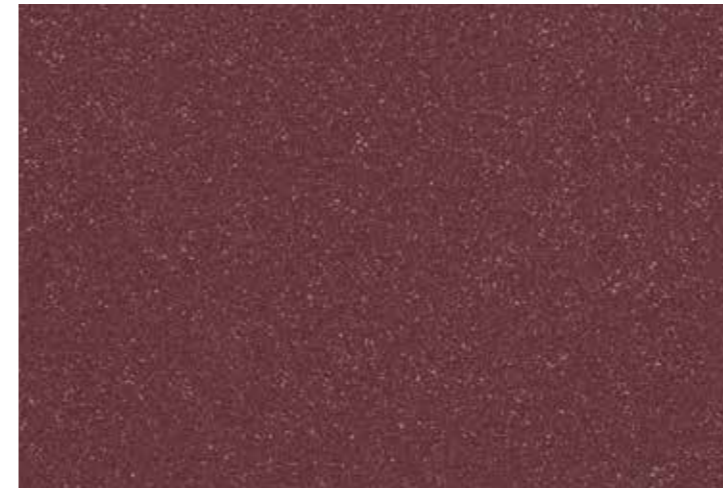
w/r 9849



NEAREST NCS S 0560-Y

9847 | Plum

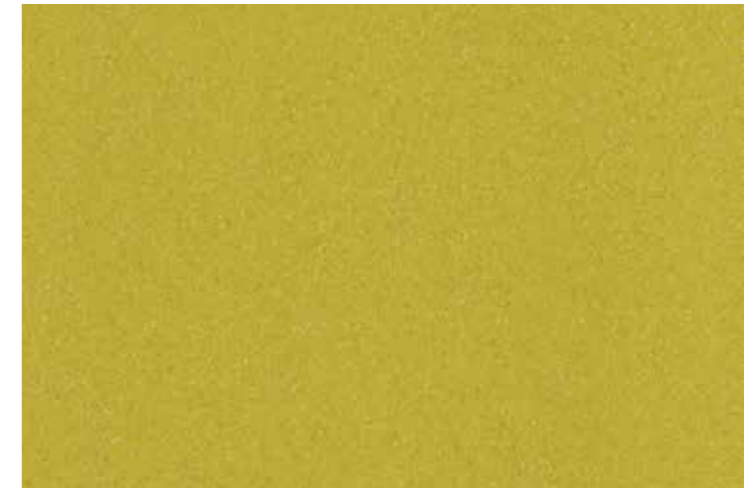
w/r 9847



NEAREST NCS S 6020-R10B

9850 | Meadow

w/r 9850



NEAREST NCS S 2050-G90Y

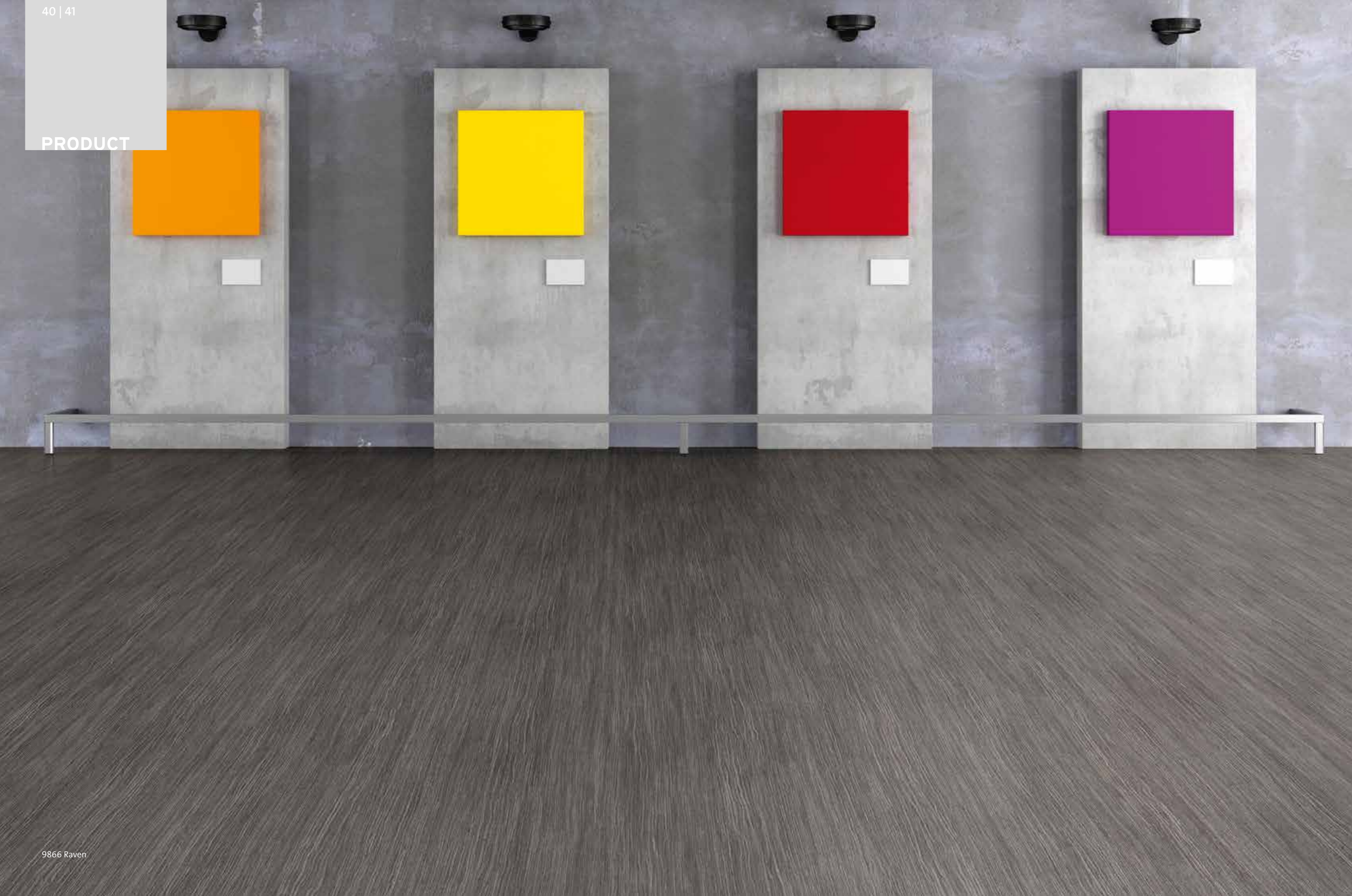
9846 | Mulberry

w/r 9846

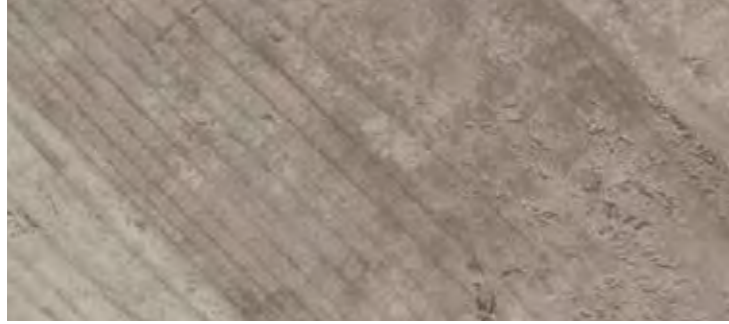


NEAREST NCS S 6010-R30B

PRODUCT



WOOD



9829 | Grey Weathered Chevron



9834 | White Pine



9833 | Classic Limed Ash



9820 | Blond Oak



9826 | Silver Oak



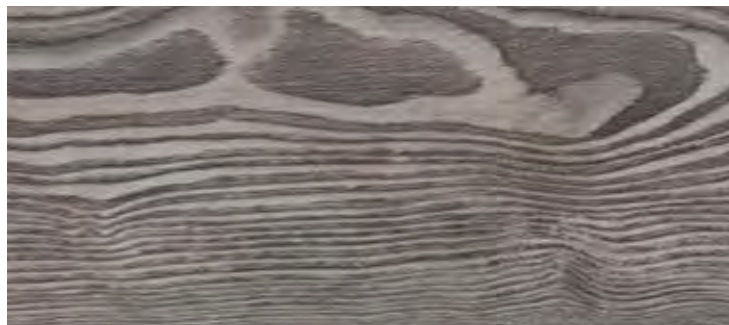
9828 | Painted Chevron



9839 | Blond Pine



9822 | Toasted Oak



9836 | Silvered Pine



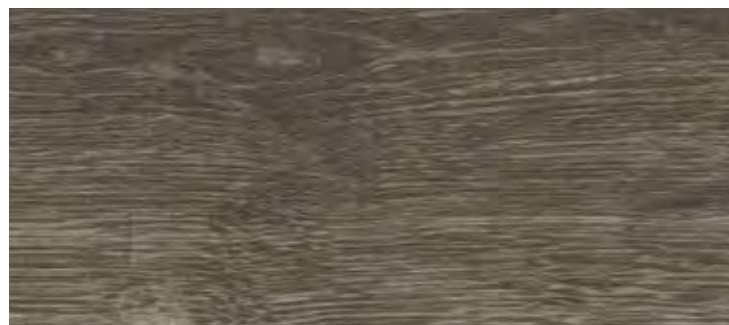
9825 | Sun Bleached Oak



9838 | Golden Pine



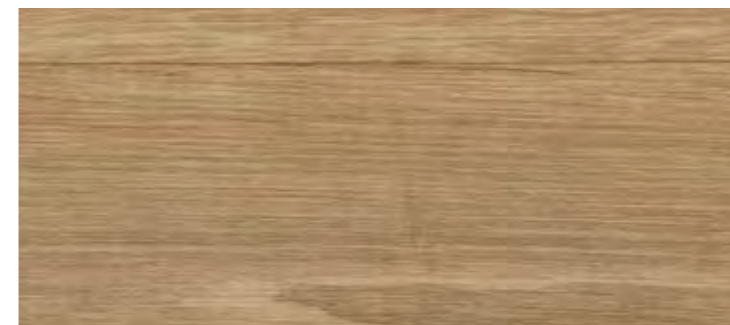
9830 | Reclaimed Chevron



9827 | Smoked Oak



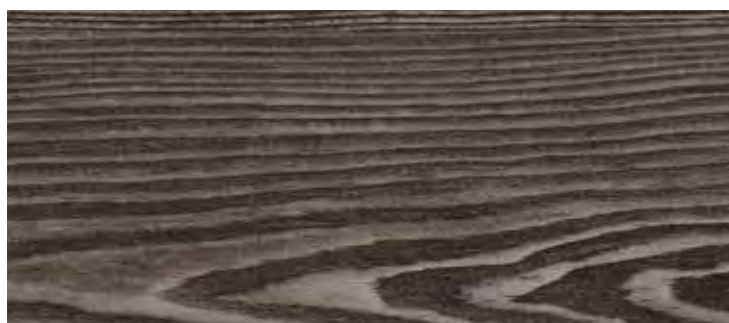
9832 | Warm Limed Ash



9823 | English Oak



9821 | Honey Oak



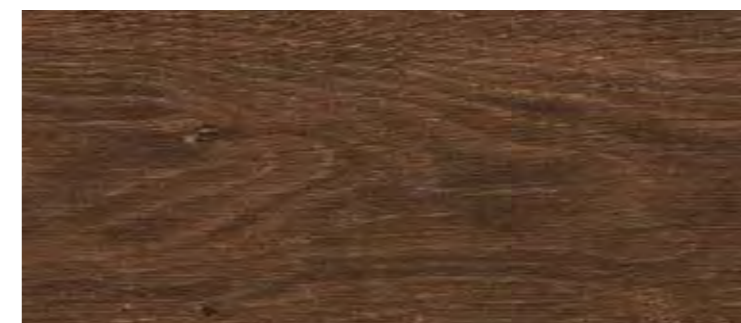
9837 | Charcoal Pine



9831 | Roasted Limed Ash



9835 | Bronzed Pine



9824 | Aged Oak



9858 | Light Grey Concrete



9855 | Warm Concrete



9860 | Light Industrial Concrete



9859 | Dark Industrial Concrete



9856 | Cool Concrete



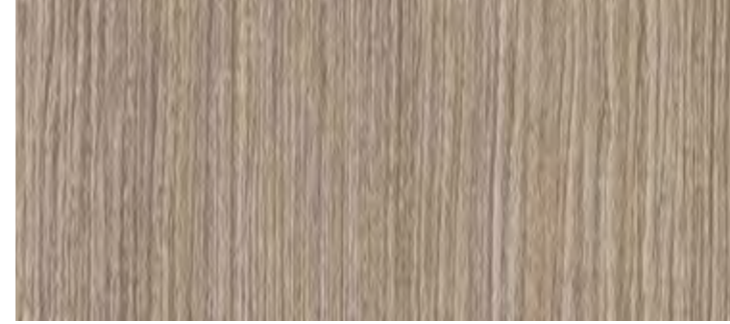
9857 | Dark Grey Concrete



9861 | Copper Ornamental



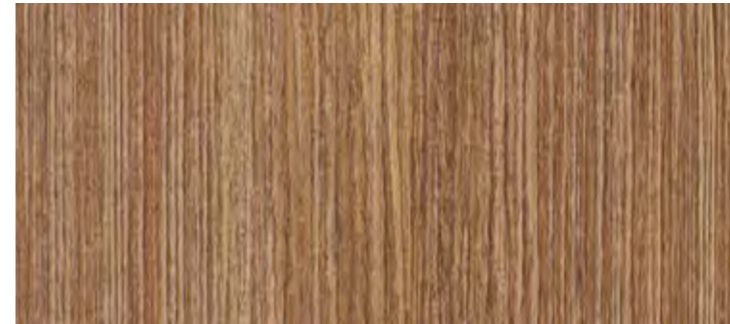
9862 | Onyx Ornamental



9869 | Honey Beige



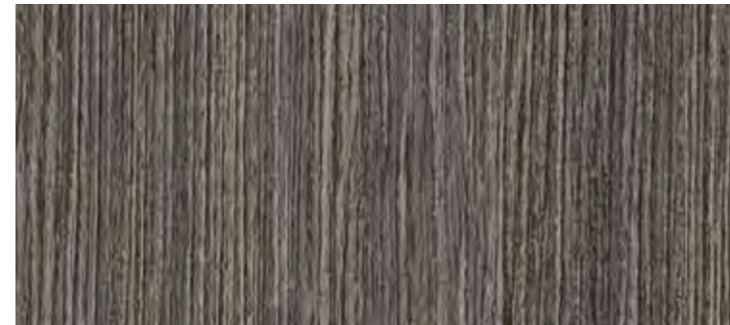
9864 | Autumn Rain



9863 | Auburn



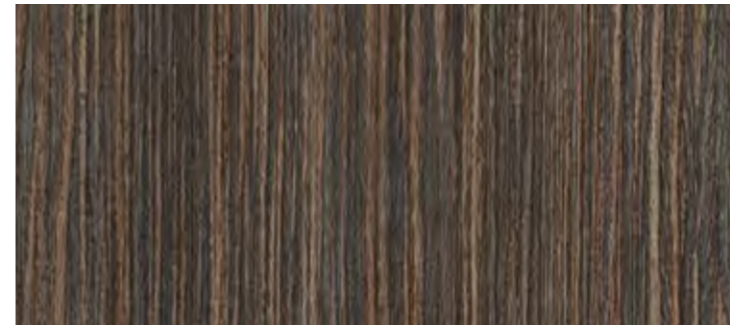
9868 | Firelight



9866 | Raven



9865 | Night Sky



9867 | Espresso

EFFECT



9844 | Luna



9840 | Oatmeal



9849 | Flaxen



9845 | Storm



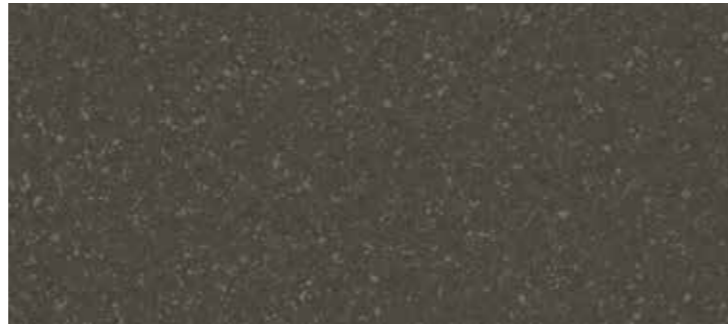
9841 | Moleskin



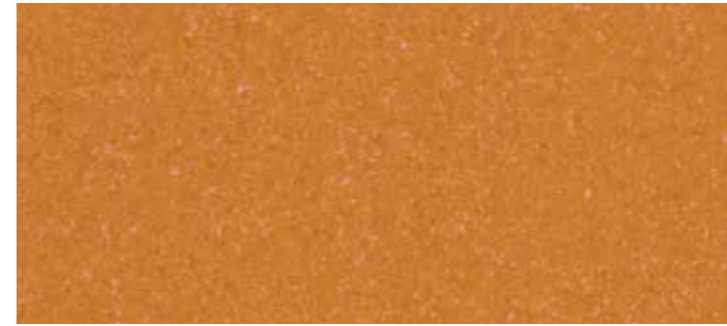
9850 | Meadow



9842 | Jet



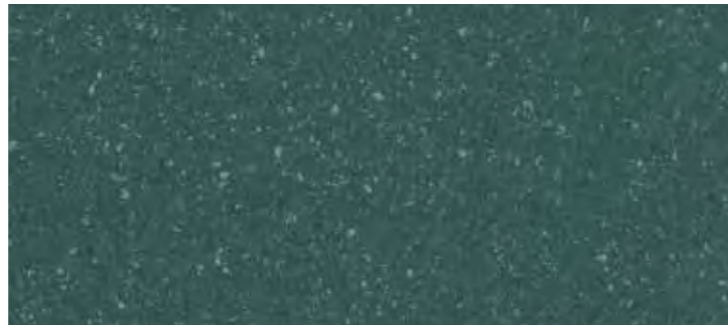
9843 | Taupe



9848 | Burnt Orange



9852 | Steel Blue



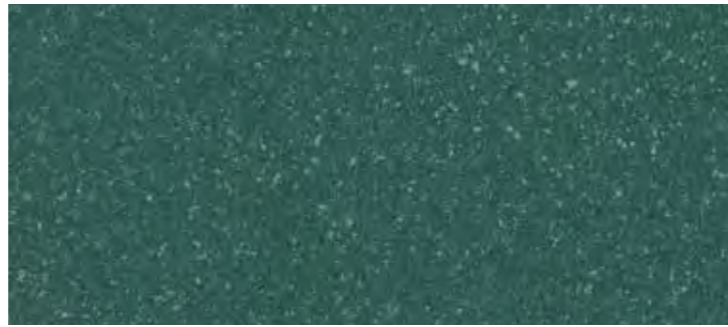
9853 | Woodland



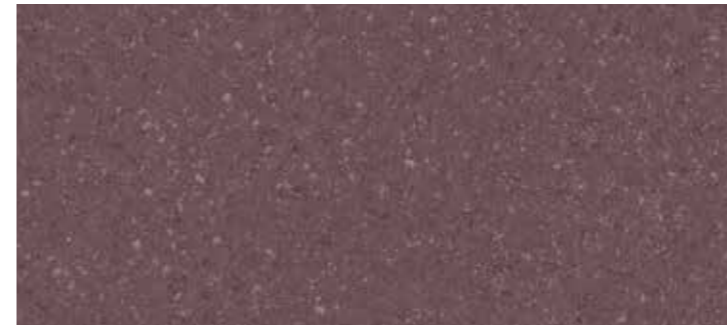
9847 | Plum



9854 | Midnight



9851 | Teal



9846 | Mulberry



Environment, sustainability

Our high quality standards ensure that EXPONA FLOW floorcoverings meet all the requirements in terms of sustainability and a healthy indoor climate. All floorcoverings are regularly tested for emissions and they consistently achieve the best levels as laid down in strict guidelines.

All EXPONA FLOW design led continuous vinyl flooring has the prescribed **CE mark** as a European declaration of conformity. Our EXPONA FLOW also has building authority approval from **the German Institute for Construction Engineering (DIBt)** and consequently complies with the system specified by the Committee for the Assessment of the Effects of Building Products on Human Health. This assessment system sets health-related quality standards for the production of building products intended for indoor use and supports the development of products with particularly low emissions. An annual external inspection of the ingredients and emissions behaviour by the Eurofins Institute, one of Europe's leading service providers in the field of analysis, ensures consistent quality. This is indicated by the "Ü" (**inspected quality mark**) on the packaging.

In France, product tests are performed using the test method in accordance with ISO 16000 and the emissions behaviour of VOCs is assessed. All EXPONA FLOW flooring has been given the best **rating A+**.

EXPONA FLOW design flooring has the "Indoor Air Comfort Gold" rating. This certificate issued by Eurofins is awarded to products with VOC emission levels below any globally determined VOC limits.

All EXPONA FLOW flooring is also **100% recyclable** and can be reused. The recycled material can also be integrated into new vinyl flooring where possible.

As a member of ERFMI, the European Resilient Flooring Manufacturer's Institute, objectflor, a company of James Halstead PLC, supports the ideal of sustainable construction and has prepared an **Environmental Product Declaration (EPD)** for EXPONA FLOW. EXPONA floorcoverings have been assessed under the EN 15804 programme of the Institute for Construction and Environment (IBU) for the environmental assessment of buildings.

Depending on the product concerned, the flooring is certified with **FloorScore** and **BRE**.

Repeat

Design families	Colour code	Repeat width x length in mm	Plank / tiles format width x length in mm
Classic Oak	9820, 9821, 9822	100 x 150	167 x 1500
Rustic Oak	9823, 9824, 9825, 9826, 9827	100 x 150	200 x 1500
Chevron	9828, 9829, 9830	100 x 150	120 x 700
Limed Ash	9831, 9832, 9833	100 x 150	166 x 1500
Pine	9834, 9835, 9836, 9837, 9838, 9839	200 x 150	166 x 1500
Ornamental	9861, 9862	100 x 150	–
Industrial Concrete	9859, 9860	100 x 150	–
Concrete	9855, 9856, 9857, 9858	100 x 100	–
Infinity	9863, 9864, 9865, 9866, 9867, 9868, 9869	100 x 100	–
Cosmos	9840, 9841, 9842, 9843, 9844, 9845, 9846, 9847, 9848, 9849, 9850, 9851, 9852, 9853, 9854	100 x 100	–

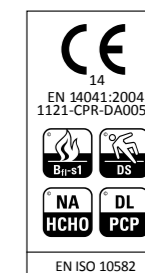
Technical data

EXPONA FLOW design led continuous vinyl flooring is a heterogeneous compact floor produced using phthalate-free plasticizers. With a wear layer thickness of 0,7 mm EXPONA FLOW is designed for areas subject to heavy use and wear.

Characteristics	Standards	EXPONA FLOW
Type of floorcovering	EN 649 EN ISO 10582	heterogeneous, PVC
Surface treatment		PUR
Colours		20 WOOD / 8 STONE / 22 EFFECT
Total weight	EN 430 EN ISO 23997	2660 g/m ²
Performance classification	EN 685 EN ISO 10874	23 34 43
Gauge	EN 428 EN ISO 24346	2,0 mm
Wear layer thickness	EN 429 EN ISO 24340	0,7 mm
Packaging roll size	EN 426 EN ISO 24341	2 m x 20 m / 40 m ²
Residual indentation	EN 433 EN ISO 24343-1	≤ 0,1 mm
Colour fastness to artificial light	EN ISO 105-B02	level ≥ 6 method A
Behaviour to fire	EN 13501-1	Bfl - s1
Slip resistance	DIN 51130 EN 13893	R10 DS
Impact sound reduction	EN 140-8 EN ISO 10140-3	up to 4 dB
Resistance to thermal conductivity	EN 12667 ISO 8302	0,02 m ² k/w
Assessment of static electrical propensity	EN 1815	< 2 kV
Chemical resistance	EN 423 EN ISO 26987	*
Abrasion group	EN 660-2 EN ISO 10582	T type I
Castor chair suitability	EN 425 ISO 4918	yes, type W, EN 12 529
Underfloor heating suitability	EN 1264-2	suitable max. 27 °C
AgBB VOC test		below quantifiable levels

* Resistant depending on concentration and time of exposure, in case of increased impact of oils, grease, acids, alkalis and other aggressive chemicals – please contact us.

Subject to change for reasons of further technical development. You will find the most up-to-date technical specifications and certificates on our website www.objectflor.de.
With regard to colour printing, it is only possible to give a provisional representation of the colour. For colour selection, an original sample should be used which we shall be pleased to send by return.



Information sur le niveau d'émission de substances volatiles dans l'air intérieur, présentant un risque de toxicité par inhalation, sur une échelle de classe allant de A+ (très faibles émissions) à C (fortes émissions).

Customised solutions

The EXPONA FLOW collection of WOOD, STONE and EFFECT designs offers a wide variety of shades and patterns, designed to look beautiful whether stand alone or combined with other designs from the range. There is virtually no limit to the shapes, patterns or imagery you can create.

Whether you want customised designs, inlays, decorations or guidance – our customer service department is always by your side with advice and practical support. We offer the precision and the flexibility of water jet cutting to meet your individual requirements. This makes even complex flooring designs easy to achieve.

Contact

www.objectflor.de

info@objectflor.de

Tel. +49 (0) 2236 96633 - 0

Fax +49 (0) 2236 96633 - 99



James Halstead™

FLOORING

International / UK
Polyflor Ltd.
Tel. +44 (0) 161 767 1111
info@polyflor.com

Australia
Polyflor Australia
Tel. +61 3 9215 4400
Tel. 1800 777 425
sales@polyflor.com.au

Canada
Polyflor Canada Inc.
Tel. +1 905 364 3000
sales@polyflor.ca

China
Polyflor Hong Kong
Tel. +852 2865 0101
anthonylam@polyflor.com.hk

Ireland
Polyflor Ireland
Tel. +353 (1) 864 9304
salesireland@polyflor.com

New Zealand
Polyflor New Zealand
Tel. +64 9 269 1111
Tel. 0800 765 935
sales@polyflor.co.nz

Norway
Polyflor Nordic
Tel. +47 23 00 84 00
firmapost@polyflor.no

Poland
Polyflor SPZ O.O.
Tel. +48 (0) 61 820 3155
polyflor@polyflor.com.pl

Russia
Polyflor Contract Ltd.
Tel. +7 812 332 42 02
info@polyflor.ru

South Africa
Poly Sales Africa (Pty) Ltd.
Tel. +27 11 609 3500
info@polyflor.co.za

Sweden
FalckDesign AB
Tel. +46 (0) 300 15820
info@falckdesign.com

United Arab Emirates
Polyflor Middle East
Tel. +971 4 349 1078
espm@eim.ae

www.polyflorathome.com
www.polyflor.com

objectflor®

Your Flooring Partner

James Halstead FRANCE
JAMES HALSTEAD FRANCE SAS

Central Europe
objectflor
Art und Design Belags GmbH
Wankelstr. 50
50996 Köln
Germany
Tel. +49 (0) 2236 96633-0
Fax +49 (0) 2236 96633-99

info@objectflor.de
www.objectflor.de



France
James Halstead France SAS
Parc Saint Christophe
10 Avenue de l'Entreprise
95861 Cergy Pontoise
France
Tel. Indigo 08.20.20.32.11

info@jhfrance.fr
www.jhfrance.fr

